

AUTUMN | WINTER 24

# Lappella

LUXURY IN LEATHER



DESIGNER QUALITY | BUTTER SOFT LEATHER | COMMERCIAL STYLES | HIGH STREET PRICES



## Welcome to the Lappella Autumn Winter 24-25 Catalogue

I am very happy to be introducing the new Lappella Autumn Winter 24-25 catalogue, full of lots of new products, colours and product developments.

### New Styles

Two exciting, highly commercial crossbody bags, Ella and Freya have been added to the Lappella Collection.

Ella is a compact, stylish crossbody. Packed with lots of internal pockets, including an internal divider pocket - it's perfect for daily use.

Freya is a gorgeous crescent shaped bag, oozing style and sophistication.

### New Colour

A scarlet red has been added to our best-selling crossbody styles, providing an additional warmth to our winter colours. Scarlet is now available in Mia, Sofia, Cleo, Yasmin and Ella crossbody bags.

### New product Developments

All bags now include Lappella branded YKK Zips. YKK produce the best quality zips in the world and are the largest zip company. We have also changed the construction of our Daisy and Yasmin crossbody bags to allow smoother running of the zip across and to the end of the bag.

### NEW STYLES FOR AW24

Ella and Freya



### NEW COLOUR FOR AW24

Scarlet Red



### New delivery service

To improve our service to you all bags are despatched within 24 hours after the day of receipt on a next day service.

We are constantly striving to improve the value we offer our customers in terms of both quality and design, and we would welcome any feedback to help achieve this. Please email [contact@lappella.com](mailto:contact@lappella.com) with your comments.

We wish all our customers a successful and happy Autumn/Winter season.

Kind Regards,

Paul Yates

Founder, LAPPELLA

Quality | Style | Luxury | Value

## Contents

Crossbody	6 - 24
Hobos	25
Totes	26 - 29
Grab Bags	30 - 31
Shoppers	32 - 33
Organisers	34
Backpacks	35
Purses	36 - 37
Belts	38 - 39



## Don't forget to ask about our ...

Leather care packs which includes, Leather Cleaner, Leather Conditioner and Leather Protector to prolong the life of your customer's Lappella butter soft leather product.





## MIA

A mobile phone crossbody bag available in 17 colours with a secure top zip for safety. Has the capacity to cope with any phone size with lots of credit card pockets and internal capacity for keys and cash plus a handy pocket on the back for travel cards or the phone's power bank.

Product Code 148-(Colour Code)

Dimensions

H 20 x W 12 x D 2.5 cm

Materials

Ultra-soft top grain Valentino leather

Details

- Capacity for large phone sizes
- Long adjustable cross body strap
- Multiple internal credit card pockets
- Secure zip top
- Plenty of room for money, lipstick etc





Product Code 140-(Colour Code)

Dimensions

H 14 x W 20 x D 4 cm

Materials

Ultra-soft top grain Valentino leather

Details

- Flap-over closure with magnetic fastening
- Long removable adjustable crossbody strap
- Zip pocket on reverse

## SOFIA

A small crossbody bag with the capacity to carry all essential items is now available in 13 colours. It has a secure flap over closure with easy magnetic fastening, a long adjustable crossbody strap and a zip pocket on the reverse.





Product Code 154 -(Colour Code)

Dimensions

H 14.5 x W 21.5 x D 6.5 cm

Materials

Ultra-soft top grain Valentino leather

Details

- Long adjustable crossbody strap
- Internal zip pocket and full-length slip pocket
- Secure zip-top fastening
- Internal zip pocket and full length slip pocket
- Zip pocket on reverse

## CLEO New

Easy to wear lightweight crossbody bag with a long adjustable shoulder strap. Belongings easily accessible with one internal compartment and secure zip pocket and full-length slip pocket. Secure top and back zip pockets. Available in nine colours.



Black - 1



Hot Pink - 30



Navy - 2



Orange - 31

New



Pearl - 13



Scarlet - 33



Silver - 14



Tan - 3



White - 32





Product Code 157 -(Colour Code)

Dimensions

H 15 x W 22 x D4 cm

Materials

Ultra-soft top grain Valentino leather

Details

- Secure Zipped Top
- Internal central zipped divider pocket
- Internal long open and pocket and zipped pocket.
- Zipped pocket on reverse
- Long adjustable strap

## ELLA New

An essential crossbody bag for everyday use. With lots of internal pockets, including a central zipped divider pocket this bag works for you all day long. Ella has a secure zipped top closure, long adjustable strap and zipped pocket on reverse. Available in six colours





Product Code 103 -(Colour Code)

Dimensions

H 14 x W 24 x D 7 cm

Materials

Ultra-soft top grain Valentino leather

Details

- Long adjustable crossbody strap
- Front pocket secured by magnet fastening
- Secure zip-top fastening
- Internal zip pocket and full length slip pocket

## AMY

A small to medium cross body bag secured by a zip, now available in ten colours. The front pocket has an easy to access magnet fastening and the interior has a zip pocket and a full length slip pocket.





Product Code 158-(Colour Code)

Dimensions

H 28 x W 20 x D 8cm

Materials

Ultra-soft top grain Valentino leather

Details

- Sleek crescent shaped bag
- Secure Zipped Top
- Internal long open and pocket and zipped pocket.
- Long adjustable strap

## FREYA New

This gorgeous handbag is stylish and lightweight to carry. Inside are 2 internal compartments, a secure zipped pocket and long slip pocket. Freya has a long adjustable strap and is secured by a zipped top.



Black - 1

Navy - 2

Tan - 3







Product Code 120-(Colour Code)

Dimensions

H 20 x W 27 x D 2 cm

Materials

Ultra-soft top grain Valentino leather

Details

- Beautiful soft eye-catching leather
- Removable adjustable crossbody strap
- Detachable wrist strap
- Secure zip top fastening
- Internal pocket and two slip pockets

## YASMIN

An easy to wear crossbody bag in the daytime that converts into a stunning clutch bag with a detachable wrist strap for an evening out. Has a secure zip to fasten at the top and two slip pockets and an internet pocket to separate key items. Available in 18 colours.





## DAISY CLASSIC & WEAVE

A medium sized crossbody bag with lots of space and a design that lies flat on your body. Opens with a zip at the top of the bag and has a secure concealed magnet to close the front pocket. Inside the bag has two slip pockets and an internal pocket. On the back there is a zipped pocket for easy to grab items. Available in three classic colour combinations.

Product Code 130 -(Colour Code)

### Dimensions

H 27 x W 26 x D 3 cm

### Materials

Ultra-soft top grain Valentino leather

### Details

- Secure zip top fastening
- Secure front pocket
- Long adjustable crossbody strap
- Internal zip pocket and two slip pockets
- Back zipped pocket
- Available in multiple colourways



## PIPPIE

One of our best sellers, Pippie is now available in a soft unstructured design. It has a leather lined flap with a elegant metal trim on the front and is secured with a magnetic fastening. Inside, Pippie has an internal zip pocket and a full slip pocket. Available in six colours

Product Code 107 -(Colour Code)

### Dimensions

H 15 x W 21 x D 8 cm

### Materials

Ultra-soft top grain Valentino leather

### Details

- Flap-over closure with magnetic fastening
- Elegant metal trim
- Long adjustable crossbody strap
- Internal zip pocket and full slip pocket





## HARRIET

This is a medium size casual and comfortable cross body with a spacious interior. It secures with a zip at the top and has two slip pockets inside and an internal zip pocket. On the back there's another secure zip pocket.

Product Code 104 -(Colour Code)

Dimensions

H 18 x W 28 x D 10 cm

Materials

Ultra-soft top grain Valentino leather

Details

- Secure zip-top fastening
- Long adjustable crossbody strap
- Internal zip pocket and two slip pockets
- Back zipped pocket



## SIENNA

Smart cross body bag that can accommodate all your daily essentials. Three internal pockets including a zipped divider pocket. The bag is secured by a full leather lined flap and a magnetic fastening. Zipped pocket on reverse and adjustable shoulder strap.

Product Code 155 -(Colour Code)

Dimensions

H 16.5 x W 19.5 x D 8 cm

Materials

Ultra-soft top grain Valentino leather

Details

- Leather lined flap over closure with magnetic fastening
- Long adjustable shoulder strap
- 2 spacious internal compartments separated by central zip divider
- Internal zip pocket and full-length slip pocket
- Secure zip-top opening Front flap pocket
- Zip pocket on reverse





## CLARA

Clara is the perfect organiser crossbody bag for everyday use. Compact and lightweight with an adjustable crossbody strap it is an essential bag in any collection. Roomy inside with two compartments separated by another zip compartment and a wide slip pocket and zipped pocket. There is a further full pocket inside so you can keep all your essential items separate. The flapover design with magnetic button gives you added security during the day.

Product Code 153 -(Colour Code)

### Dimensions

H 17 x W 23 x D 8 cm

### Materials

Ultra-soft top grain Valentino leather

### Details

- 2 spacious internal compartments separated by a zip compartment.
- Full pocket inside front
- Internal slip pocket and zipped pocket.
- Wide adjustable carrying strap
- Zip pocket on reverse
- Leather lined flap
- Magnetic fastening



Black - 1



Navy - 2



Tan - 3



## ALICIA

The Alicia has a unique woven design that'll stand out. When you open the flap, you'll find a beautiful silver and matching lining interior. The flap closes with a strong hidden magnet and although this bag is stunning, it's still really practical with lots of space. Available in nine colours.

Product Code 144 -(Colour Code)

### Dimensions

H 15 x W 24 x D 6 cm

### Materials

Ultra-soft top grain Valentino leather

### Details

- On trend design
- Comfortable wide adjustable carrying strap
- Strong magnetic closure
- Lots of space for your essentials
- Inside flap pocket
- Eye catching interior lining



Black - 1



Blush - 12



Camel - 10



Mint Green - 11



Morning Blue - 16



Navy - 2



Pearl - 13



Smoke Grey - 26



Tan - 3





## ALEXA

Available in seven colours, the Alexa bag now has a new tassel on the front as a design feature. It can be carried using a grab handle or via the cross body strap which is detachable and can be stored in the bag. It has three internal compartments, metal studs on the base of the bag and a secure zip top fastening. Available in six colours.

Product Code 105-(Colour Code)

### Dimensions

H 25 x W 23 x D 12 cm

### Materials

Ultra-soft top grain Valentino leather

### Details

- Secure zip-top fastening
- Sturdy wide carrying handle
- Handle drop 19 cm
- Additional removable adjustable crossbody strap
- 3 interior pockets, 2 secured by magnets, 1 with zip-top fastening
- Metal studs on base to prolong wear



Black - 1



Blush - 12



Morning Blue - 16



Navy - 2



Smoke Grey - 26



Tan - 3



## ANASTASIA & WEAVE

Anastasia is a very popular bag as it's compact yet highly functional. The Anastasia weave bags have smooth leather on the reverse and a weave design on the front. The thick strap makes it very comfortable to wear. It is secured with a zip at the top and has an internal zip pocket and two slip pockets for storage.

Product Code 119-(Colour Code)

### Dimensions

H 28 x W 28 x D 10 cm

### Materials

Ultra-soft top grain Valentino leather

### Details

- Smooth leather design on front, smooth leather on reverse
- Handle drop 27 cm
- Secure zip-top fastening
- Internal zip pocket and two slip pockets



Black - 1W



Black - 1



Silver - 14



Navy - 2W



Tan - 3W





## THEA CLASSIC & CROC

The Thea tote is roomy enough to pack everything required for business meetings, shopping trips or carry on-board an aircraft with all your essentials. It's designed to be held by the grab handles but also has a wide comfortable detachable cross body strap included. It's secured by a zip at the top and a magnetic fastening. Inside is a central zipped compartment, an internal zip pocket and two slip pockets. Thea has metal feet to stop scuffing.

Product Code 113 -(Colour Code)

### Dimensions

H 25 x W 32 x D 14 cm

### Materials

Ultra-soft top grain Valentino leather

### Details

- Handle drop 11.5 cm
- Additional removable adjustable crossbody strap
- Magnetic fastening for security
- Secure zip-top fastening
- Internal central zipped compartment
- Internal zip pocket and two slip pockets
- Metal studs on base to prolong wear



Black - 1



Navy - 2



Black - 17



Smoke Grey - 26



Tan - 3



Brown - 19



## SARAH

The Sarah hobo is a large bag with a wide strap attached to beautiful 'O' rings to make the bag both stunning and very comfortable on your shoulder. There is also an option to use a detachable cross body strap. For security, there's a zip top fastening as well as a magnetic fastening. Inside there's a central zipped compartment, an internal zip pocket and two slip pockets. On the base, the Sarah has metal studs to prevent scuffing.

Product Code 115 -(Colour Code)

### Dimensions

H 26 x W 31 x D 15 cm

### Materials

Ultra-soft top grain Valentino leather

### Details

- Wide adjustable shoulder strap with elegant "O" rings
- Handle drop 25 cm
- Magnetic fastening for security
- Secure zip-top fastening
- Internal central zipped compartment
- Internal zip pocket and two slip pockets
- Metal studs on base to prolong wear



Black - 1



Navy - 2



Oxblood - 4



Tan - 3



## ATHENA

This gorgeous tote is classy and stylish. With a spacious interior, internal zip and slip pockets and handy side pockets, this bag will carry your belongings all day long. It can be worn over the shoulder or by the two carry handles, which are adjustable, providing extra comfort

Product Code 152 -(Colour Code)

Dimensions

H 25 x W 35 x D 15 cm

Materials

Ultra-soft top grain Valentino leather

Details

- Handle drop 20 cm
- Adjustable carrying straps
- Internal zip pocket and two slip pockets
- Large internal capacity
- Two side pockets
- Zip top closure
- Metal studs on base to prolong wear



Black - 1



Black Croc - 17



Navy - 2



Tan - 3

## OLIVIA

The Olivia tote is a large roomy bag with an internal central zipped compartment and a secure zip top closure. It sports beautifully designed, curved handles attached with stunning 'O' rings and a long detachable cross body strap. It also has an internal zip pocket and two slip pockets, plus zip pocket on the reverse.

Product Code 147 -(Colour Code)

Dimensions

H 24 x W 37 x D 13 cm

Materials

Ultra-soft top grain Valentino leather

Details

- Strong carrying handles
- Secure zip top closure
- Internal central zipped compartment
- Internal zip pocket and two slip pockets
- Elegant design
- Long detachable adjustable shoulder strap
- Zip pocket on reverse
- Handle drop 17 cm



Black - 1



Black Croc - 17



Navy - 2



Tan - 3





## KIKI

Available in seven colours, Kiki has a stunning bamboo style handle that's very comfortable to hold. It's secured by a leather-lined flap with a twist lock fastening for added security and beauty. It has a pocket on both the front and back of the bag with three internal pockets. If you want to carry the bag differently, there's a detachable strap which allows the bamboo handle to be seen even when the bag is being carried cross body. On the base are metal feet to keep the bag scuff-free.

Product Code 151 -(Colour Code)

### Dimensions

H 20 x W 28 x D 11 cm

### Materials

Ultra-soft top grain Valentino leather

### Details

- Flap over grab bag with leather lined flap
- Twist lock fastening for added security
- Robust metal furniture
- Internal pocket and two slip pockets
- Additional front pocket
- Zip pocket on reverse
- Removable adjustable cross body strap
- Metal feet on base
- Handle drop 13cm



## GABRIELLA

Gabriella is a small tote that is highly distinctive due to the twisted comfortable strap. It closes securely with a zip, has a zip pocket on the reverse and is very practical with an internal zip pocket and full length slip pocket.

Product Code 142 -(Colour Code)

### Dimensions

H 18 x W 23 x D 12.5 cm

### Materials

Ultra-soft top grain Valentino leather

### Details

- Elegant design
- Internal zip pocket and full length slip pocket
- Secure zip top closure
- Zip on reverse



## SASKIA

Saskia is a larger version of Gabriella, with the same stunning twist strap but a much larger capacity.

SKU 143 -(Colour Code)

### Dimensions

H 22 x W 28 x D 11 cm



Morning Blue - 16







## SUSIE

Lightweight roomy shopper with an internal zipped compartment that can be removed and used separately. The bag can be carried by the two sturdy carrying straps over the shoulder, arm or by hand.

Product Code 156 -(Colour Code)

### Dimensions

H 33 cm x W 37 cm x D 8 cm

### Materials

Ultra-soft top grain Valentino leather

### Details

- Twin shoulder straps
- Removable Internal zipped bag compartment secured by 2 press studs
- Magnetic closure
- Handle drop 28.5 cm



Black - 1



Navy - 2



Tan - 3



Mint Green - 11



Black - 1



Blush - 12



Morning Blue - 16



Navy - 2



Pearl - 13



Tan - 3

## ISABELLA

Stocked in seven colours, this woven leather shopper is very stylish. It has strong carrying handles, a long detachable adjustable shoulder strap, an internal central zipped compartment, a secure zip top closure and an internal zip pocket and two slip pockets. On the reverse of the bag is another zip pocket. This makes the Isabella the perfect practical choice for everyday use whilst still making you feel very special. The perfect accompaniment to Alicia

Product Code 145 -(Colour Code)

### Dimensions

H 30 x W 32 x D 10 cm

### Materials

Ultra-soft top grain Valentino leather

### Details

- Strong carrying handles
- Secure zip top closure
- Internal central zipped compartment
- Internal zip pocket and two slip pockets
- Elegant design
- Long detachable adjustable shoulder strap
- Zip pocket on reverse
- Handle drop 17 cm



## LAYLA CLASSIC & WEAVE

Layla is the perfect bag to keep everything organised. It is a wide bag that when opened via the leather-lined flap has lots of pockets to keep everything where you can find it. The pockets include a front zipped and slide in pocket, internal zip pocket with zip and two slip pockets and there's a zip pocket on the reverse. The flap shuts with a magnet and the shoulder strap can be adjusted to be used cross body if needed.

Product Code 149 -(Colour Code)

### Dimensions

H 31 x W 35 x D 15 cm

### Materials

Ultra-soft top grain Valentino leather

### Details

- Secure flap over bag
- Front zipped and slide in pocket inside
- Internal zip pocket containing internal zip pocket and two slip pockets
- Magnetic closure
- Zip pocket on reverse
- Long detachable adjustable strap



Black - 1W



Navy - 2W



Tan - 3W



Black - 1



Mustard - 29



Navy - 2



Black - 1

## NICOLE

Nicole is beautifully soft and unstructured and shows off your fashionable but independent style. This spacious backpack allows you to carry lots of essential items comfortably and hands free with long adjustable carrying straps and a looped top handle should you wish to hold. On the top of the bag are two spacious compartments, one with two internal zipped pockets, the other with a slip pocket. There are extra zipped pockets front and back.

Product Code 154 -(Colour Code)

### Dimensions

H 28 x W 26 x D 13 cm

### Materials

Ultra-soft top grain Valentino leather

### Details

- 4 zipped compartments, 2 on top, 1 to front and 1 on reverse.
- 2 slip pockets and 1 zipped pocket in top compartments
- Spacious interior
- Panelled front design
- Long adjustable carrying straps
- Looped top carrying handle
- Lightweight





# EVA

The cutest of purses, Eva its perfect to accommodate all your change, keys and credit cards. Although small, it has lots of internal pockets and secured by a zip across the top. There's a range of 16 beautiful colours to choose from to match any handbag or outfit.

Product Code 141 -(Colour Code)

### Dimensions

H 8 x W 12 x D 2.5 cm

### Materials

Ultra-soft top grain Valentino leather

### Details

- Zip round purse
- 4 credit card pockets
- 4 extra internal pockets
- 2 gusseted pockets
- Hard wearing light coloured striped lining for easy visibility



# ELISIA

The smaller version of Emilia. Use it when going out with your crossbody and have limited space. It still has lots of room with two internal pockets, zipped and slip pockets and nine credit card pockets.



Product Code 123 -(Colour Code)

### Dimensions

H 10 x W 15 x D 2.5 cm

### Materials

Ultra-soft top grain Valentino leather

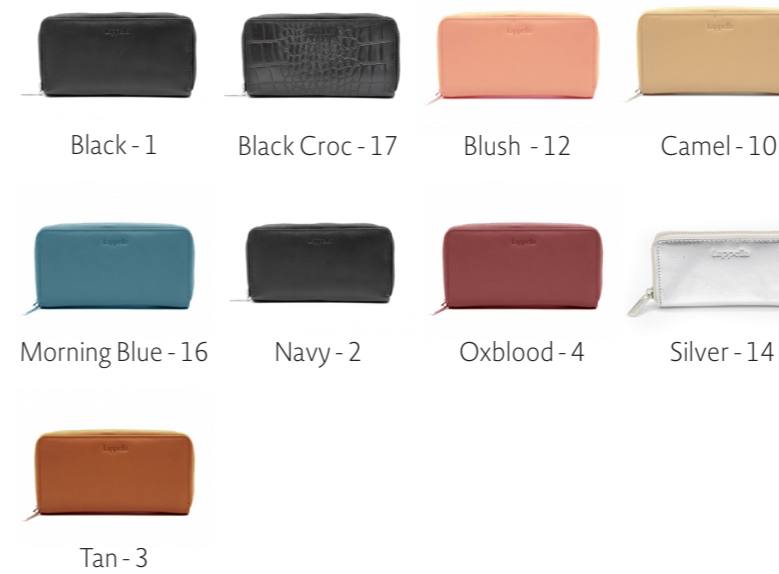
### Details

- Zip round purse
- 9 interior card pockets
- Central gusseted zip pocket
- 2 gusseted pockets
- Additional slip pocket
- Slip pocket on reverse



# EMILIA

This purse oozes sophistication!. With numerous credit card pockets, space for coins, tickets and receipts and all your other essentials, you will never lose anything again with this classy zip round purse.



Product Code 122 -(Colour Code)

### Dimensions

H 10 x W 20 x D 2.5 cm

### Materials

Ultra-soft top grain Valentino leather

### Details

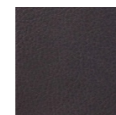
- Zip round purse
- 9 interior card pockets
- Central gusseted zip pocket
- 2 gusseted pockets
- Additional slip pocket
- Slip pocket on reverse



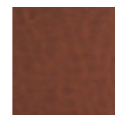
# SAIRA

With a smart solid buckle and understated chic design, this belt will add a finishing touch to your favourite pair of jeans or trousers.

PACK INCLUDES: 1 Small, 2 Medium, 1 Large



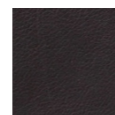
Black



Brown



Gold



Navy



Silver

## Dimensions

Width 3.5 cm, thickness 3 mm

## Materials

Cowhide

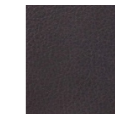
## Details

- Small - size 8-10 (27-29" waist)
- Medium - size 12-14 (30-32" waist)
- Large - size 16-18 (33-36" waist)

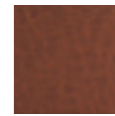
# MELISSA

A classic but cool and sophisticated style which can be worn with any outfit.

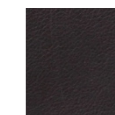
PACK INCLUDES: 1 Small, 2 Medium, 1 Large



Black



Brown



Navy

## Dimensions

Width 3 cm, thickness 3 mm

## Materials

Cowhide

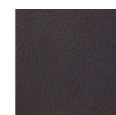
## Details

- Small - size 8-10 (27-29" waist)
- Medium - size 12-14 (30-32" waist)
- Large - size 16-18 (33-36" waist)

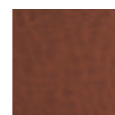
# VICTORIA

Slim and stylish this belt will add a touch of class to your favourite dress, skirt or jeans.

PACK INCLUDES: 1 Small, 2 Medium, 1 Large



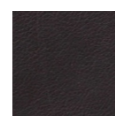
Black



Brown



Gold



Navy



Silver

## Dimensions

Width 2.5 cm, thickness 3 mm

## Materials

Cowhide

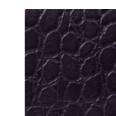
## Details

- Small - size 8-10 (27-29" waist)
- Medium - size 12-14 (30-32" waist)
- Large - size 16-18 (33-36" waist)

# MILA

This elegant and stylish croc belt will add sophistication to any outfit.

PACK INCLUDES: 1 Small, 2 Medium, 1 Large

Black  
CrocBrown  
CrocNavy  
Croc

## Dimensions

Width 3 cm, thickness 3 mm

## Materials

Cowhide

## Details

- Small - size 8-10 (27-29" waist)
- Medium - size 12-14 (30-32" waist)
- Large - size 16-18 (33-36" waist)





# Lappella

LUXURY IN LEATHER

## Registered Office

1 Wales Lane,  
Barton Under Needwood,  
Staffordshire,  
DE13 8JF

W: [www.lappella.com](http://www.lappella.com)  
E: [contact@lappella.com](mailto:contact@lappella.com)  
T: 01283 712134

## Office & Distribution

Sure Store  
Ninth Avenue,  
Burton Upon Trent  
Staffordshire, DE14 3JZ